

Electronic Design



THE AUTHORITY ON
EMERGING TECHNOLOGIES
FOR DESIGN SOLUTIONS

MARCH/APRIL 2019
electronicdesign.com

BODY CONTROL MODULES

The Automotive Networking Solution p12



*****FIRM#GRR-RT L01#C-031
#110057640/0# EG 002
7 #PI EDE001 P48 B 11063 167456
MARTIE VARGAS
BEN SIMBORIO
21131 MARBELLA AVE
CARSON CA 90745-1339



Access to
8.5 Million+
Products Online

DIGIKEY.COM

IN THIS ISSUE

FEATURES

12 Networking in Automotive Body Control Modules

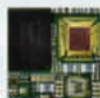
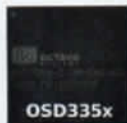
The role of BCMs in automotive design continues to expand to handle the increase in features and networking bandwidth requirements. Here's a look at the architectures and interfaces in play.



12

24 GPU Trends: The Quest for Performance, Latency, and Flexibility in ISR Systems

Employing strategies such as GPUDirect, PCIe Device Lending, and implementing SISI API can help system integrators optimize ISR solutions.



28

34 The New "Shift-Left" Multi-Dimensional PCB Design-Verification Platform

Editor Bill Wong talks with Mentor's David Wiens about its unique "shift-left" PCB design verification platform for early prototyping and reduced re-spins.

41



38 Simplified Wi-Fi Service Discovery

Connecting to a Wi-Fi network that provides the right service for your smartphone or IoT device has always been an issue. IEEE 802.11aq solves this problem.

41 Simplifying BLE Mesh Integration

Bluetooth Low Energy (BLE) Mesh technology allows smart devices to maintain a cooperative wireless network that can be managed remotely, leading to the development of smart homes, building automation, and sensor networks.

45



45 Giving Smartcards a New Face

That smartcard in your pocket can get even more interesting with electrophoretic displays.

COLUMNS & DEPARTMENTS

4 ON ELECTRONICDESIGN.COM

8 EDITORIAL

10 NEWS & ANALYSIS

47 AD INDEX

48 LAB BENCH

Radar Isn't Just for Cars and Aviation

EDITORIAL MISSION:

To provide the most current, accurate, and in-depth technical coverage of the key emerging technologies that engineers need to design tomorrow's products today.

ELECTRONIC DESIGN (ISSN 0013-4872) is published bi-monthly in Jan/Feb, Mar/Apr, May/June, July/Aug, Sept/Oct and Nov/Dec by Informa Media Inc., 9800 Metcalf Ave., Overland Park, KS 66212-2216. Paid rates for a one-year subscription are as follows: \$60 U.S., \$90 Canada, \$120 International. Periodicals postage paid at Kansas City, MO, and additional mailing offices. Editorial and advertising addresses: ELECTRONIC DESIGN, 605 Third Avenue, New York, NY 10158. Telephone (212) 204-4200. Printed in U.S.A. Title registered in U.S. Patent Office. Copyright © 2019 by Informa Media Inc. All rights reserved. The contents of this publication may not be reproduced in whole or in part without the consent of the copyright owner. For subscriber services or to order single copies, write to Electronic Design, PO Box 2100, Skokie, IL 60076. POSTMASTER: Send change of address to Electronic Design, PO Box 2100, Skokie, IL 60076. Canadian Post Publications Mail agreement No. 40612608. Canada return address: IMDEX Global Solutions, P.O. Box 25542, London, ON N6C 6B2.

Permission is granted to users registered with the Copyright Clearance Center Inc. (CCC) to photocopy any article, with the exception of those for which separate copyright ownership is indicated on the first page of the article, provided that a base fee of \$2 per copy of the article plus \$1.00 per page is paid directly to the CCC, 222 Rosewood Drive, Danvers, MA 01923 (Code No. 0013-4872/94 \$2.00 + \$1.00). Copying done for other than personal or internal reference use without the express permission of Informa Media, Inc. is prohibited. Requests for special permission or bulk orders should be addressed to the editor. To purchase copies on microfilm, please contact National Archive Publishing Company (NAPC) at 732-302-6500 or 800-420-NAPC (6272) x6578 for further information.

Subscribe to Newsletters

ElectronicDesign.www.electronicdesign.com/newsletters/signup**Altech® High End
DIN Enclosures**

- 8 different series in many sizes
- Largest selection in the industry
- DIN Rail and Panel Mount
- Fixed and Pluggable Terminals
- Integral PC Board Guides

altechcorp.com/dinenclosures**Altech® High End
Cylindrical Proximity Sensors**

- 8mm to 30mm Diameters
- Up to 15mm Sensing Distances
- Flush Mount and Non-Flush
- IP67 (NEMA1, 3, 4, 6, 12, 13)
- Nickel Plated Brass and Stainless Steel



Excellent Quality at Competitive Prices
www.altechcorp.com/PushPlug

ElectronicDesign.**MAY/JUNE 2019
ISSUE PREVIEW**

Ad Close: 5/3/19 • Materials Due: 5/10/19

TECHNOLOGY:

Robotics

INDUSTRY TRENDS

Augmented/Virtual Reality

PRODUCT TRENDS

Sensor Integration

ENGINEERING ESSENTIALS

Motor Control

DIFFERENCE BETWEEN

Networking

<http://electronicdesign.com>**INDEX**

Advertiser	Page	Advertiser	Page	Advertiser	Page
Absopulse Electronics	20	IMS.....	22-23	Radicom Research.....	6
ACCES I/O Products	27	Ironwood Electronics Inc.....	20	SNYN Electronics Co., Ltd	42
Altech Corp.	2	Keystone Electronics	9	SourceESB	33, 40
Avago Tech.....	1	KOA Speer Electronics.....	11	Stanford Research Systems	7
Avtech Electrosystems, Ltd	31	Linear Integrated Systems	14	Taiyo Yuden.....	44
Coilcraft.....	15	Memory Protective Devices.....	21	TDK-Lambda Americas Inc.....	26
Comsol Inc.	35	Mouser Electronics.....	32a/b	Wago Corp.....	5
Dean Technology	37	Mouser Electronics.....	BC		
Digi-Key	FC	Pasternack Enterprises.....	16-19		
Digi-Key	IFC	Pico Electronics Inc.....	43		
Hammond Mfg. Co. Inc.....	25	Pico Technology	IBC		

For more information on products or services visit our website www.electronicdesign.com. The advertisers index is prepared as an extra service. Electronic Design does not assume any liability for omissions or errors.